

Colchester Arts Centre

Visual Story for Visitors

This visual story is designed for visitors to Colchester Arts Centre. The story contains photos, descriptions and information about our venue (getting here and a visual tour of our spaces) to give you an idea of your experience in our space before visiting.

Travelling to our venue



Walking

Colchester Arts Centre is just a short walk away from Colchester High Street and local bus stops. Colchester Train station is a 25-minute walk away. You can follow the Elephant Trail (Fixing the Link) from the station to the High Street by following the yellow banners. Colchester Town station is even closer.

Cycling

There are several bicycle stands outside Colchester Arts Centre which are covered by CCTV. Further cycle parking can be found outside St Mary's car park and outside Debenhams in Culver

Street West. There are a number of off road and quiet road cycle routes into the town centre.

Bus

There are lots of frequent bus services that stop in Colchester Town Centre, either on nearby Head Street or in the High Street, both a five-minute walk away. There are also a number of evening bus services that offer a last bus just after 11pm. Please [click here](#) for detailed public transport options to Colchester Arts Centre and to locate a bus network map to find your nearest bus service and utilise the Trainline journey planner to plan your journey.

Train



The nearest station is Colchester town, however there are more trains coming into Colchester's main station. There are frequent trains from London, Chelmsford, Ipswich and Norwich and stations in between. You can plan your journey to Colchester main or town station on the Greater Anglia website. It is approximately a 25-minute walk from Colchester station, which is clearly marked to the High Street by the Fixing the Link route – look out for elephants and yellow banners on lamp posts! To catch a bus into town, follow the Fixing the Link route to the bus stop on the opposite side of the road to the station. All buses stopping there stop in the High Street which is a ten minute bus ride away.

Driving

There is no parking outside the venue in Church Street, except for loading in and out. The nearest car park is St Mary's a short walk away on Balcerne Hill, leaving to cross the bridge towards the Hole in The Wall pub. Past the Mercury Theatre on your right follow the path around to the right until you reach a T junction - turn right on to Church Street. Proceed to the end of Church Street and the main entrance is on your left (Daytime Box Office entrance further back on your left). If you have an electric car, you can check out the nearest charge points on Zap-map. Please find the video linked here for a visual journey of walking from the St Marys car park to our venue - [Click here](#)

Car Share

If you have to travel by car, could you car share with friends or relatives? Join the LoveurcarColchester car share bay scheme for FREE and park in preferential bays in town centre car parks including St Mary's. Normal charges apply but park close to the exit in a wider, more convenient bay and share the parking charge and fuel with your fellow car sharers. Or park in the LoveurcarColchester bays at Colchester Station for free! (Maximum stay eight hours) then walk into town. If you would like to search for a car share, use the Essex Lift Share website

Accessible Parking

We have three blue badge parking spaces directly outside our venue on Church Street. These are on a public street so there is no guarantee they will be available.



You can contact a member of our team should you have any other questions about accessible parking if you're attending an event at the arts centre.

Our venue

This is the exterior of the entrance to our box office

This is where you can purchase tickets and speak to our staff at specified times of the day.

This is located on Church Street, further up adjacent to the Mercury Theatre.

The image shows a handrail on the left with three small steps and a door on the left. There is a button at the bottom of the steps which says “Please ring for ramped assistance”. There is a black sign on the railings which says “Colchester Arts Centre. Box Office Monday-Saturday. There is full access for wheelchair users throughout the centre”



This is the inside of our box office

You can access this from the street (see page 1) or via the accessible ramp inside our venue (see page 16).

Come in and speak to Mick the Hippy about purchasing tickets or other general enquiries. Other members of our team are usually around if you have any general enquiries. Opening times are 10am-2pm Monday-Friday, 10am – 5pm Saturday, Closed Sunday.

The image below shows a desk where Mick the hippy usually sits in front of a window. He will be sat to the left of the door as you enter, next to a poster advertising a previous show – Reverend Billy 'Earth Riot' in Nov 2021.



This is the accessible entrance to our performance space

This is where you can come directly into our performance space, if you have any access requirements. This is the next door further down Church Street after the box office entrance. The doors open outward on to the pavement and the floor is flat from the street to the space.

The Image shows brown double doors with a small black sign on the right side which reads “Colchester Arts Centre, please ring doorbell for: Pre show accessible entrance, Artist load in, deliveries”. There is a doorbell located to the bottom right of the sign.



This is the main entrance to our performance space

This is the main audience entrance for our events. The image shows the exterior of the church, a large arched brown church door, cobbled stone flooring and black metal gates.

Our main entrance is located at the bottom of Church Street near the steps leading to Balcerne Hill. You can access our main audience entrance by heading through the black metal gates, and heading immediately left through the brown church doors.



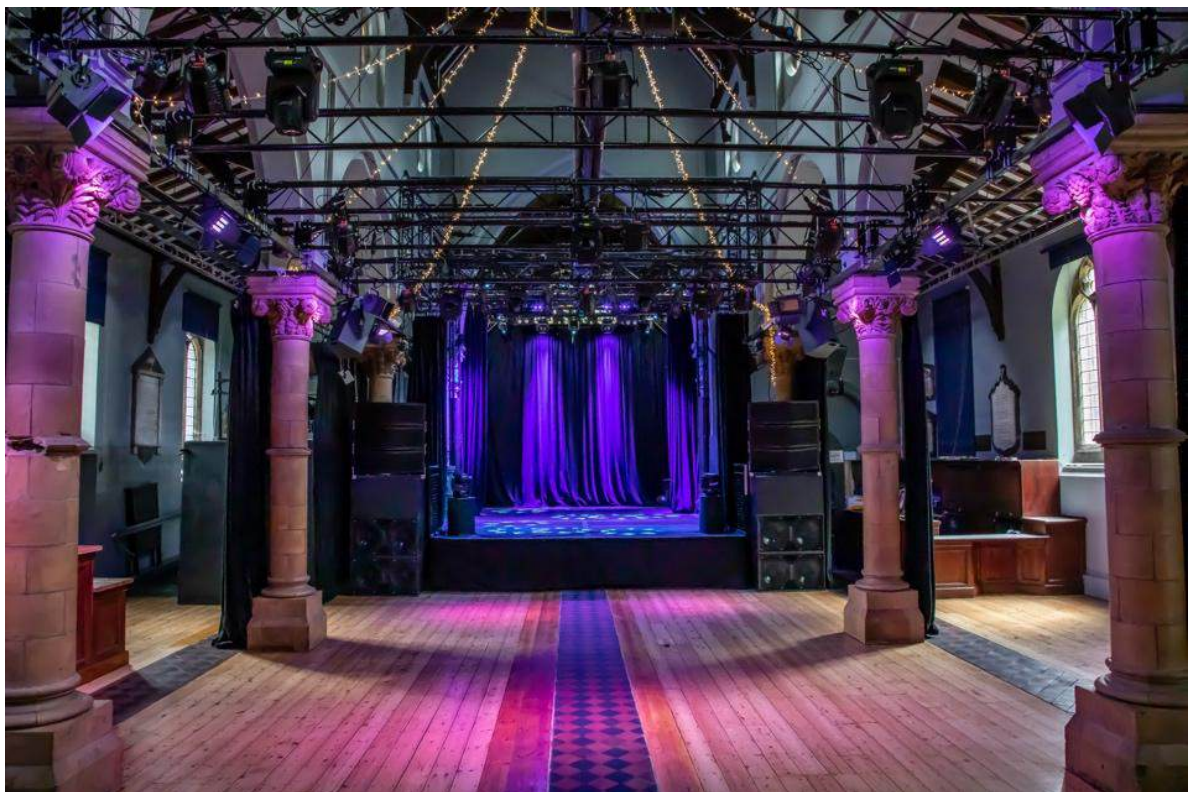
This is the foyer where our audiences generally enter from.

There are a set of automatic doors on entry, the image shows a brown wooden front desk to the left, where a member of our staff will greet you and ask you to show your ticket. There is a walkway into the space to the right which is step-free. Our staff are very friendly and will answer any questions you might have.



This is our main events space.

This is where we put on all of our performance, comedy and music gigs. The image shows a set up for a standing or seated audience. We have standing gigs, seated events facing our stage and also put in a rig to reverse the space for some of our performance programme. The seats are not numbered so you can sit anywhere you like. The inside of our building is all on one level so is fully wheelchair accessible.



We also include seat coverings for ‘priority seating for access customers’ on our shows, this is pictured below.



This is our green room

This is a space mainly used by our staff and artists who perform at our venue. Our facilities include a sink, cupboards with crockery, tea/coffee facilities, a table/chairs, an undercounter fridge and washing machine. If you are an artist performing with us and require certain things in the green room, please do contact our staff.



These are our bars

We have two bars in our main space, which are located either side. Both bars have been built with a lower platform for lower level service for anyone who might need that. On some events (mostly music gigs and comedy), both bars will open but on other events (e.g. Wonderful Wednesdays) one bar will be operating.

This is one of our bars, located to the right of the space if you're looking at the stage upon entry.

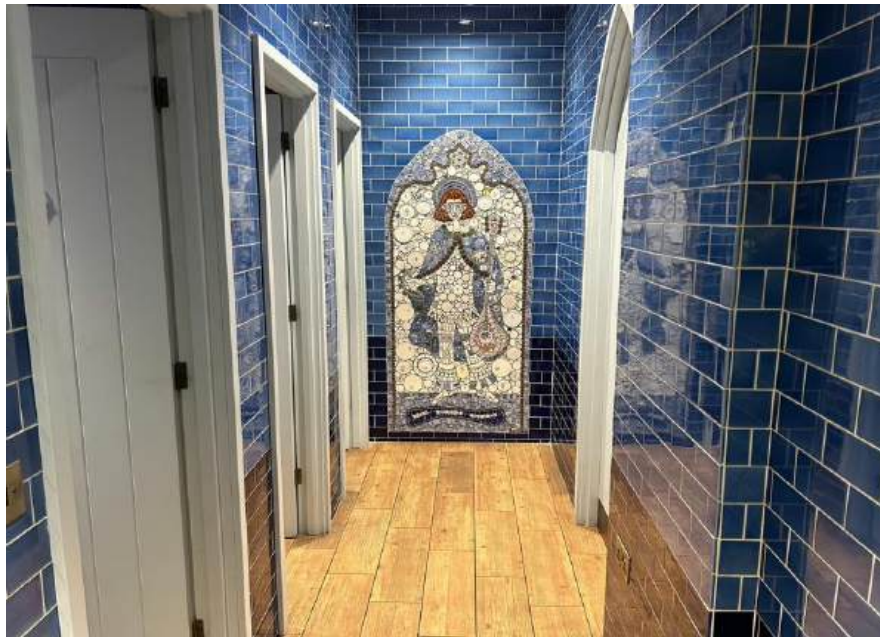


This is our cans bar, located on the left of the space if you're looking at the stage upon entry.



**We have several the toilets in our main space.
These are our gender-neutral toilets and urinals.**

To the left we have three locked cubicles and the door on the right leads to a room with urinals. The image shows rooms with blue subway tiles with a mosaic centrepiece featuring artists who have performed in the past.



This is the women's toilets

Our women's toilets are located to the left of the space near the cans bar. The images below show the centrepiece mirror design, hand dryers, sinks and blue subway tiling in a similar design (as featured in our other toilets).



This is our accessible toilet

The door to our accessible toilet is located in the main space near the fire exit doors (leading to the graveyard). The second image shows the inside of the toilet, featuring similar design to our other toilets but with additional access features such as low level toilet and sink with hand rails and pull chord alarm systems.



This is the ramp from the main space to our backstage area leading to our box office

The ramp is on the left hand side, if looking at the stage just past the accessible doors entrance. Follow this ramp up and through a set of doors.

This ramp is also for step free access to our box office should you need that to purchase tickets, enquire about any of our events or speak to a member of our team.



COLCHESTER ARTS CENTRE

Never Knowingly Understood

If you would like to find out any more information about Colchester Arts Centre, please visit our website.

colchesterartscentre.com

If you would like to find out any more information about accessibility at Colchester Arts Centre, please visit our website.

colchesterartscentre.com/accessibility

If you would like to speak to a person you can

Email: accessibility@colchesterartscentre.com or

Call: 01206 500900

We look forward to welcoming you to our lovely venue soon!